

Genesis Roving Data Collector Solution

Genesis 1000 Series Ethernet Networking Software and Hardware

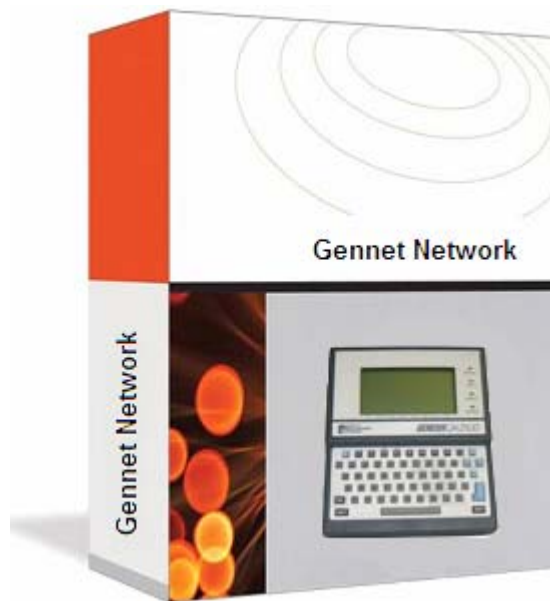
CONTROL YOUR SHOP FLOOR WITH

- SPC Software
- Gage Interfaces
- Genesis Roving Collectors
- Wireless Data Transfer

LAN-Link 232 FEATURES

- Direct connection to Genesis RS232 port
- Ethernet 10Base-T or 100Base-TX (Auto-Sensing)
- RJ45 Connector
- LED Indicator for network connection, activity and power
- Input Voltage 8-24 VDC with included power adapter
- Dimensions 2.5x1.58x 794 in
- CE certified

For more information on any of our products or services please visit us on the Web at:
www.spcanywhere.com

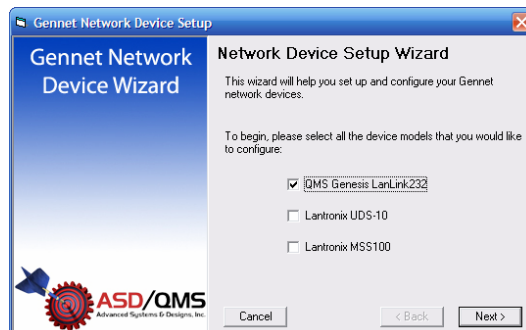


- Connect your Genesis 1000 Series data collectors to your existing Ethernet network
- Create and maintain part programs on PC.
- Send and Receive Setups from Genesis collectors
- Data is automatically saved on PC to CSV files for simple easy data
- Automatically save data to SPC1+ Enterprise or any SPC software system

ASDQMS' **LAN-Link 232** hardware and **Gennet Network** Communication software allows any *Genesis QA1000 Series* data collector to communicate, using standard 10Base-T ethernet wiring, with SPC1+ Enterprise Pro or any SPC software running on a Local Area Network. There is no longer a need to run special network wiring to integrate data collector communication within your manufacturing environment. *Genesis* can now communicate over your existing LAN wiring.

LAN-Link 232 is an RS232 to 10Base-T converter module. Simply plug one end into the *Genesis*' serial port and the other into your network wiring.

The *Genesis* data collector may be permanently connected to the network, allowing "Real-time" upload of SPC data. *Measured Data* as well as *Traceability Information* can be automatically uploaded to the PC database as each subgroup is completed. Now a manager is able to view a real-time status of manufacturing processes on his desktop PC. When the *Genesis* is being used as a fully portable data collector, it may be plugged into any **LAN-Link 232** converter module to manually download inspection routines or upload data, as required. While a permanent LAN connection is possible, it is not required.



Gennet Network Communication Software Features and Benefits

ASDQMS' **Gennet Network** communication software provides the network software link between the *Genesis* data collectors and the SPC1+ Enterprise Pro or any SPC software running on your LAN.

This software structures efficient communication between *Genesis* data collectors on the shop floor and SPC1+ Pro or any SPC software running on your LAN. It runs, as a background task on a network "Node" PC, to fully support the *Genesis* – SPC1+ Enterprise Pro interface.

SERVICES AVAILABLE

Technical Support
Installation and Setup
Maintenance
Application Support
Hardware Support

SYSTEM REQUIREMENTS

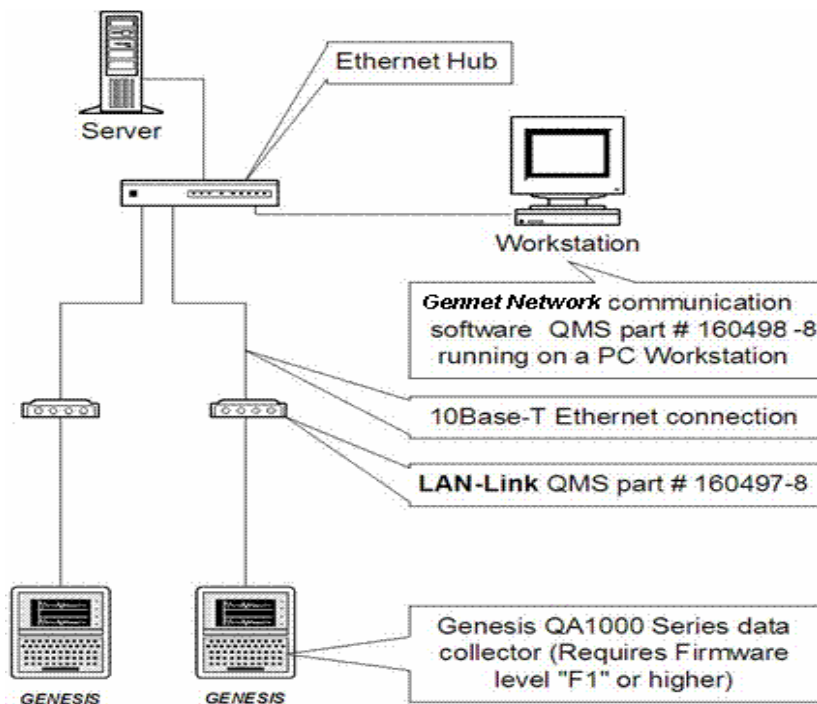
- Windows 2000 or XP
- PC with 300 MHz or higher, Intel Pentium/Celeron family, or AMD K6/Athlon/Duron family, or compatible processor recommended
- 512 MB RAM or higher
- 1.5 GB of available hard disk space
- Ethernet 10/100M connection

TURNKEY SOLUTIONS

ASDQMS provides customers with complete SPC solutions including installation, training and support. We help manufactures eliminate the high cost of inconsistent quality.

For more information on any of our products or services please visit us on the Web at:
www.spcanywhere.com

Copyrighted © 2008 Advanced Systems & Designs, Inc.



Genesis to Ethernet Connection



1395 Wheaton Ave.
Suite 200
Troy, MI 48083 USA
Phone 248.370.9919
Fax 248.370.9921