



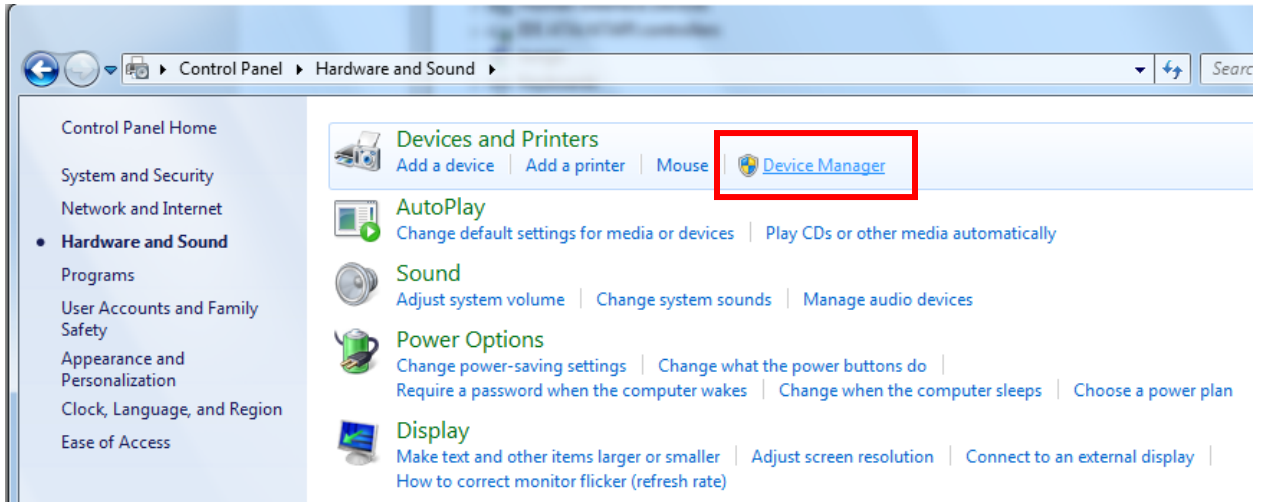
## How to Keep the USB Port Active When Computer is Left Unattended

Occasionally when left unattended for long periods of time a computer may go to sleep (screensaver), which will cause the USB ports to close. When the computer comes back on it will not reopen the USB port which the SmartCable USB or GageMux USB is connected to on your computer. This can prevent a SmartCable USB or GageMux USB from sending a reading to the computer. These steps will show you how to prevent your computer from closing the USB ports when an Advanced Systems & Designs device is connected.

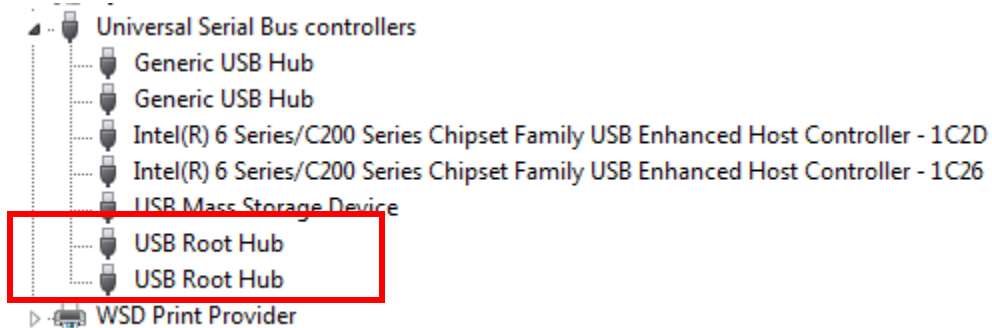
1. Go to Start menu and open the control panel



2. With control panel open select hardware and sound, then under devices click on Device Manager

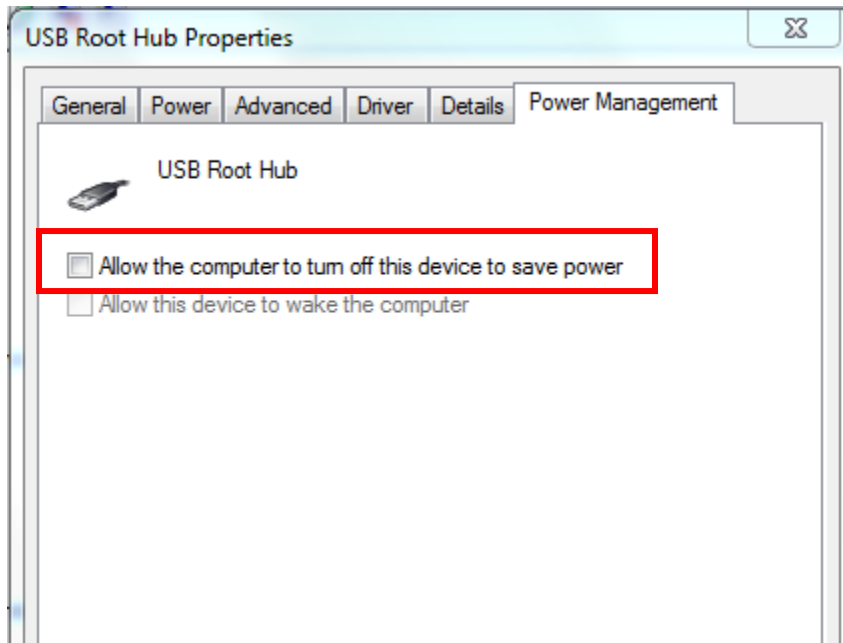


3. Inside the Device manager window, expand the Universal serial bus controllers option



4. Right click on USB Root Hub and choose properties. If there are multiple USB root hubs, you should do this for all of them.

5. Under the power management tab uncheck the box that says “Allow the computer to turn off this device to save power”



6. This will prevent the computer from turning the hub off so that the port which the SmartCable USB or GageMux USB is connected to will no longer be closed when the computer is left unattended
7. If you are unable to change these settings, you will need to reset the device using the instructions below:
  - a. For a GageMux USB: press the reset button on the back of the device.
  - b. For a SmartCable USB: you must disconnect and reconnect the USB end of the SmartCable USB to the computer.